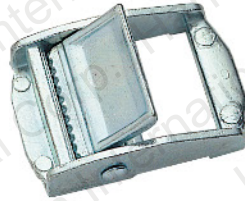


CAM BUCKLE / ZINC DIECAST & STAINLESS STEEL



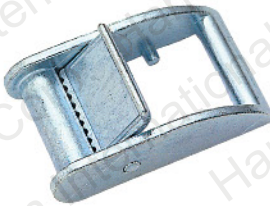
CAM-34
Size: 3/4"
B/S: 150kgs



CAM-01
Size: 1"
B/S: 250kgs



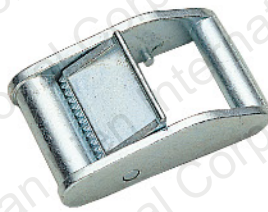
CAM-01H
Size: 3/4"
B/S: 320kgs



CAM-02
Size: 1"
B/S: 400kgs



CAM-02S
Size: 1"
B/S: 350kgs



CB-03
Size: 1"
B/S: 350kgs



CAM-03
Size: 1 1/2"
B/S: 700kgs



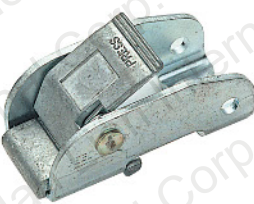
CAM-04-1
Size: 1"
B/S: 680kgs



CAM-04-112
Size: 1 1/2"
B/S: 800kgs



CAM-04-2
Size: 2"
B/S: 1000kgs



CAM-07-1
Size: 1"
B/S: 900kgs



CAM-07-2
Size: 2"
B/S: 1300kgs



CAM-08SS-2
Sheet SS304
Thickness: 2.5mm



CAM-01-SS
SS Lost Wax
Size: 1"



CAM-02-SS
SS Lost Wax
Size: 1"



CAM-04-1SS
SS Lost Wax
Size: 1"